

N1 ROLL FORMING LINE mod. PRHS 16/500 for n3 "C" profiles

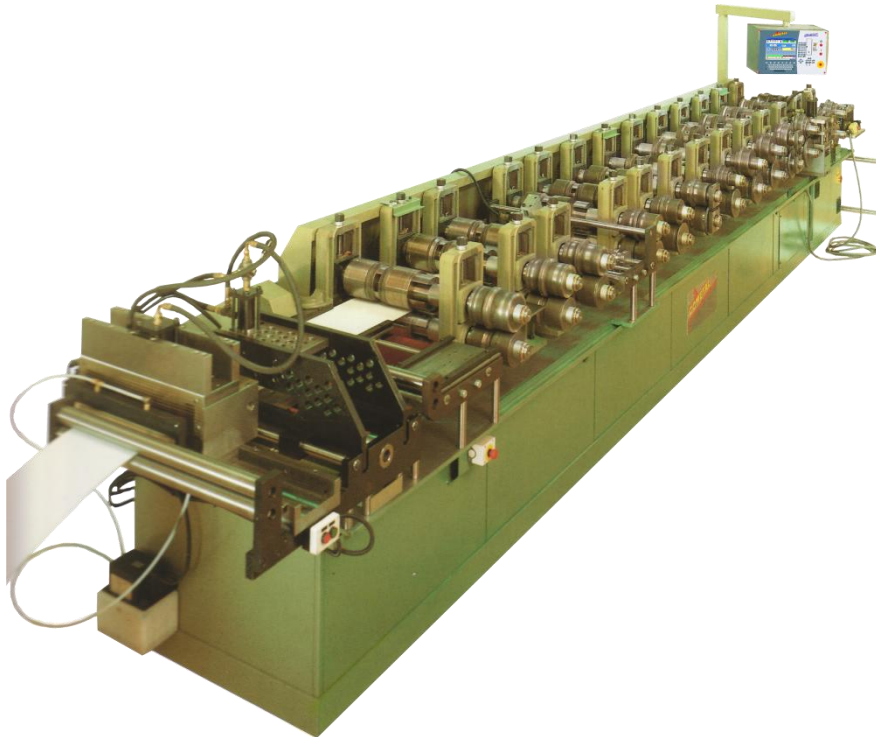


MAINS FEATURES

. Material to be processed			
- definition	:	Coils	
- Type	:	Mild / galvanised steel	
- Max weight	Kg	:	according to decoiler
- Maximum thickness	mm	:	30
- Max. production speed	m/1'	:	20
. Electrical supply	V	:	400
	Hz	:	50
. Going sense		:	left/right
. Total installed power	a.c.	HP	:
	a.c.	HP	:
			22+22 (control / inverter)
			7,5



DESCRIPTION



① ROLL FORMING MACHINE PRHS 16/500

. Maximum width between stands	mm	:	500
. Maximum width over stands	mm	:	0
. Diameter of shafts	mm	:	70
. Number of forming stations	N	:	14 (frame allowed for 16)
. Motors	HP	:	22+22

- **one piece table**, from planed steel with lining up grooves for the transmission uprights
- N14 **stations** with special **cast-iron stands**, housing large bearings of the best domestic and foreign brands.
- Steel roller shafts, entirely ground with 10 mm slots.
- **Upper roller shafts adjustable** according to the thickness to be worked, with graded vernier scale for setting.
- **Adjustable** introducing **guides** to line up the strips on the different sets of rolls
- Group of straighteners lined up on each set of rollers
- Geared motors (with electronic control), **HP 22+22** with **direct connection** to the powering's shaft
- **One piece** transmission **shaft** Ø mm 40 from the motor **to the different stations** with conical gears
- **Full direct driving** from reduction gear + n2 introduction **stations independently coupled**
- Start up directly from the main electrical panel, or from a **remote control** box with forward and backward.

② ELECTRICAL EQUIPMENT AND HANGING UP ADJUSTABLE CONTROL PANEL

- Remote control
- Programmer type **EC 609 VIDEO**, with control of :
 - Speed
 - Number of pieces
 - Cutting length
 - Lubrification
 - punching - notching



③ HYDRAULIC PLANT

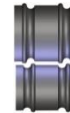
- . Tank L : 150
- . Hydraulic unit motor pump HP : 7,5



- Adjustable frame after the rolling machine, for the right positioning and lining up of the different cutting units with the suited sets of rolls.

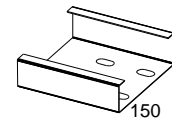
④ SETS OF ROLL FORMERS

in special tempered and rectified steel as drawings attached

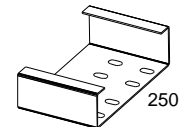


N1 complete set of combined **roll formers + straighteners + quick coupling spacers** for :

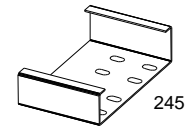
- "C" profile mm 41 x 150 x 47



- "C" profile mm 66 x 250 x 74



- "C" profile mm 59 x 245 x 67



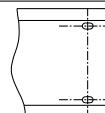
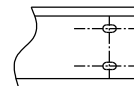
⑤ HYDRAULIC PUNCHING TOOLING

Tooling fixed between stations n°3 & 4

- complete hydraulic **devices** for **auto. punching on line**
- **CNC** control (pitch, n° of holes, time etc...)
- electronic position sensors

N1 complete **hydraulic tooling** for n2 oblongs ≈ mm 14 x 25 pitch mm 70

N1 complete **hydraulic tooling** for n2 oblongs ≈ mm 14 x 25 pitch mm 170



⑥ HYDRAULIC CUTTING TOOLING

- **complete** of **blades & dies**, hyd. cylinder electronic **sensor**
- **CNC** control

N1 complete **hyd. cutting** unit for "C" mm 41 x 150 x 47

N1 complete **hyd. cutting** unit for "C" mm 66 x 250 x 74

N1 complete **hyd. cutting** unit for "C" mm 59 x 245 x 67

